

JK Rear Tube Bumper Installation Instructions

Thank you for purchasing our Jeep JK Rear Tube Bumper!

Installation Notes:

- Installation of this bumper requires drilling
- This bumper will not accommodate the factory spare tire location
- It is recommended to install all components before painting or powder coating to verify fit
- A factory service manual is recommended for removal of all factory components
- This bumper will work with most hitch receivers. The receiver needs to be installed prior to installation of the bumper.

Tools required:

- Ratchet
- Metric socket set
- Standard socket set
- Drill
- 3/8" drill bit
- 1/2" drill bit
- Center Punch

Step 1:

Using your factory service manual as a reference, remove the existing rear bumper, and spare tire from the Jeep

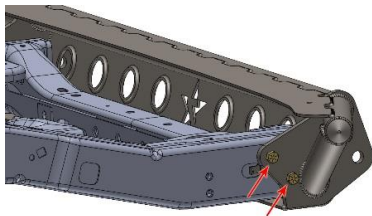
Step 2:

Place the flag nut inside the frame rail on the driver's side at the two holes in the side of the frame where the tow hook was bolted. The tab on the flag nut should protrude out of the large hole in the frame.



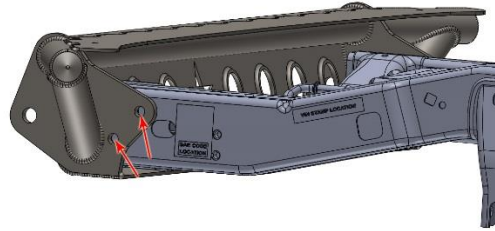
Step 3:

Place the bumper on the rear of the Jeep and install the two 1/2" bolts through the side of the bumper and into the flag nut installed in the last step. Lightly tighten the bolts to hold the bumper in place.



Step 4:

Move to the passenger of the Jeep. Align the bumper so it is sitting level and straight. Mark, center punch, and drill two 1/2" holes in the side of the frame at the location of the two holes in the side of the bumper.

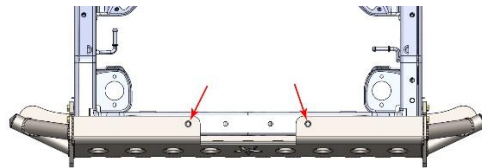


Step 5:

Remove the bumper and place the flag nut in the passenger frame rail. Install all four 1/2" bolts in both sides of the frame and lightly tighten.

Step 6:

Move under the Jeep and locate the two holes in the bottom of the bumper. Mark, center punch, and drill two 3/8" holes through the rear cross-member. Install the provided 3/8" bolts in the holes, place a nut and washer on the top side of the cross-member and tighten to 25 Ft Lbs.



Step 7:

Tighten the four 1/2" bolts in the sides of the frame to 50 Ft Lbs.

Step 8:

Ensure that all hardware is tight. Re-tighten all hardware 500 miles after installation. Check hardware for tightness after every 3000 miles.

Congratulations you have completed the installation of your JK rear tube bumper!

Professional Services Disclaimer:

The content of this Website, such as text, graphics, images, information and other material (collectively, "Content") is for informational purposes only. Any information furnished on this Website is not intended nor implied to be automotive advice and is not intended to replace personal consultation with a qualified automotive service technician, mechanic or similar automotive professional.

Barnes 4WD has not examined the Content for accuracy, timeliness, completeness, appropriateness, or helpfulness. Barnes 4WD does not endorse any specific tests, products, procedures, opinions, or other information that may be mentioned on this Website. Your reliance upon information and Content obtained by you at or through this Website is solely at your own risk. IN NO EVENT SHALL BARNES 4WD BE LIABLE OR OTHERWISE RESPONSIBLE FOR ANY DAMAGE OR INJURY (INCLUDING DEATH) TO YOU, OTHER PERSONS, OR PROPERTY ARISING FROM ANY USE OF ANY PRODUCT, INFORMATION, IDEA, OR INSTRUCTION CONTAINED IN THE CONTENT.